



English II

by

Leah 
Segerstrom

CONTACT

✉ leah.segerstrom@jcschools.us

🌐 (573) 659-3286

📞 Plan Time: 2nd hour

INFINITE CAMPUS

Keep track of your students' grades online on Infinite Campus. **Regularly checking grades prevents surprises.** I will update Infinite Campus as needed. Late work is entered after current work. Please contact me if you have questions

[Infinite Campus Parent Portal](#)

GOOGLE CLASSROOM

Assignments will be posted in Google Classroom. Grades will be posted in Infinite Campus. It is crucial that students find their work on Google Classroom when they are absent so that they do not fall behind. Parents can opt to receive notifications and updates from Google Classroom via email.

SUPPLIES

- Folder/Binder (any type or size)
- Head Phones for Chromebook
- Pencils for your student
- Colored grading pen
- Notebook

Highlighters are recommended! Ample amounts of annotation will occur through the year and highlighting is a great annotation practice.

EXPECTATIONS

Students are expected to come to class with the necessary materials (Chromebooks, a writing utensil, paper, etc.) on time and in a respectful manner, ready to learn. Be responsible, put unneeded electronics away, and listen attentively when someone is speaking.

COURSE DESCRIPTION

English II curriculum builds on the expository writing skills developed in English I. Students use these writing skills to compose at least one narrative, one explanatory, and one persuasive full process paper. English II also continues the development of skills in the fundamentals of grammar and usage. Literature read and analyzed includes variety in both genre and author. The state required End of Course (EOC) exam is administered upon successful completion of this course.

ABSENT WORK POLICY

After an absence, students are expected to get all notes and assignments they have missed from **Google Classroom**. Students will have one day for every day of excused absence to submit make up assignments. Students who miss a quiz or test due to an absence should make arrangements to complete the test early or promptly upon returning to school.

RETAKE POLICY

Retakes are allowed but it is required that the student meet with me first and completes all formative activities leading up to the summative assessment. If there is ever a concern about a particular test score and their options regarding said score, please reach out! Retakes are always permitted in the case of absences.

NOTE: Final exams **cannot** be re-tested

LATE WORK POLICY

Late work **is** accepted however please be aware that there will be a 10% reduction in the overall grade for the assignment. Late work is accepted up until the unit test. I highly encourage students to turn in work even if it is close to the deadline. Remember that it is *always* better to have something in the gradebook rather than a 0! If a student is absent, they will have time that is proportional to the number of days absent to complete the work that they missed.

GRADING SCALE

100 - 93 A	76 - 73 C
92 - 90 A-	72 - 70 C-
89 - 87 B+	69 - 67 D+
86 - 83 B	66 - 63 D
82 - 80 B-	62 - 60 D-
79 - 77 C+	59 - Below F



PLEASE BRING CHARGED CHROMEBOOK TO CLASS EVERY DAY

COURSE SCHEDULE

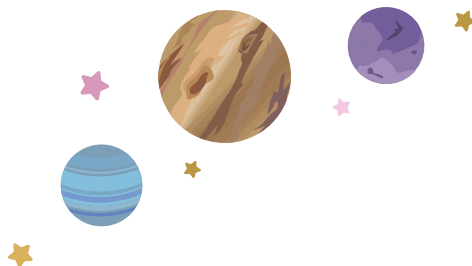
Hour 1	8:40-9:31	ENGLISH II
Hour 2	9:36-10:27	PLAN
Hour 3	10:32-11:23	ENGLISH II
Hour 4	11:28-12:52	PRE-AP ENGLISH II
Hour 5	12:57-1:48	ENGLISH II
Hour 6	1:53-2:44	RTI/DT
Hour 7	2:49-3:40	ENGLISH II

ADDITIONAL RESOURCES

STUDENTS IN MY CLASS WILL HAVE MANY RESOURCES TO HELP THEM SUCCEED.
ALONG WITH THEIR GUIDED NOTES AND ASSIGNMENTS COMPLETED IN CLASS,
HERE ARE A FEW ADDITIONAL RESOURCES AVAILABLE TO THEM:



MLA STYLE



INFINITE CAMPUS
PARENT PORTAL



OXFORD-ENGLISH
DICTIONARY

I'M AVAILABLE TO MEET WITH STUDENTS BEFORE AND AFTER SCHOOL HOURS BY APPOINTMENT AND DURING MY PLANNING PERIOD. FEEL FREE TO REACH OUT THROUGH EMAIL OR PHONE AT ANY TIME!